

Eclipse 8

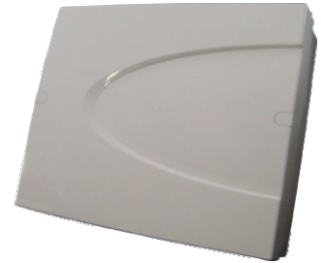
Alarm Control Panel

Description

Eclipse 8 is an alarm panel with 8 zone inputs for security of small residential, commercial or office premises. The control management of the panel is available via keyboard or proximity card reader. Full programming is done via keyboard or directly with ProsTE software. The installer can choose between 3 alternative types of programming - by addresses, by operations or tree structure menus. The panel has a built in digital communicator and is compatible with wide range of detectors, communication modules and control devices.

Technical Specifications

Mains Supply Voltage	230VAC \pm 10%; fuse 0,63A
Mains Transformer	17 VAC / 17 VA
Back-up Battery	12V / 7 Ah
Battery Charger	13.8 V / 0,75A Resettable fuse
Max. current consumption from external devices	2A
Power output	13.8 V DC / 0,75A Resettable fuse
Connection Wires	2,5mm ²
Operating Temperature	-10°C / +50°C
Dimensions, plastic box.	290 x 240 x 80 mm



Functional Specifications

Zones	8
Balancing of zones	1 or 2 balancing resistors
Connection styles	5 types
Areas	1
Outputs	4 low current (up to 100mA) + 1 powerful (up to 1A)
Access Codes	4 digit; 8 user (1 manager), 1 engineer
Memory LOG	256 events with date and time
Digital Communicator	built in; 2 telephone numbers; CIA and Contact IDD
Devices on bus	up to 2
Programming	3 types - by addresses, by operations, tree structure
Access Control	via proximity readers;

Packing Information

- **Master box** - 5 units Eclipse 8, dimensions 542 x 334 x 286 mm

Compatible Product Range

- **LED 8** - keypad
- **LED 32** - keypad
- **LCD 32** - keypad
- **LCD 32S** - keypad
- **TITAN series** - PIR detectors
- **SR 105; SR110** - indoor sirens
- **SR 200; SR300** - outdoor sirens
- **MDU 2; MDU V** - remote control modules
- **SensoMAG INTR** - fire detectors with relay base 12V
- **GBD10, GBD20** - glass break detectors
- **AUMS-12S** - magnetic contacts
- **ARGUS** - Universal GSM communication module
- **AJAX GSM/GPRS** - Universal GSM/GPRS communication module
- **AJAX SP** - WEB application for monitoring and control
- **ProsTE** - Specialized programming software

* Reduced functionality up to 1 area and 8 zones

Contact Information