

# ProsTE

## PROGRAMMING SOFTWARE

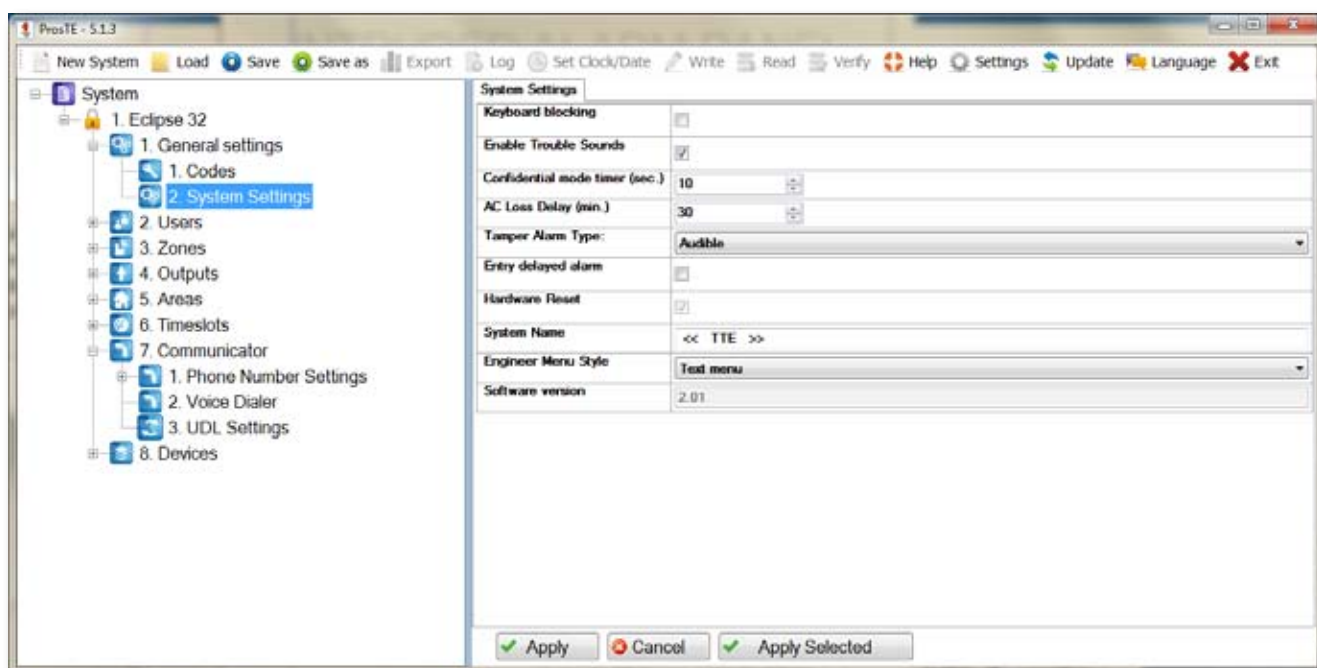
ProsTE is a software package for programming of Teletek Electronics intruder and fire alarm panels and modules. The software allows fast and user-friendly programming to the benefit of installers.

### ProsTE Advantages

- Intuitive and user friendly graphic interface
- Easy programming of all system parameters
- Saves time and effort
- Allows creation of default configurations in TDF (Teletek Data Files) ready for use on site
- Decreases possibility of mistakes during programming
- No need to remember addresses or use programming manuals
- Completely free download and regular updates available at <http://www.teletek-electronics.com>
- Multilingual support
- Help wizard

### Supported products

- Eclipse 8/16/32/99
- BRAVO Wireless panel
- VEGA6 RF
- IRIS
- SIMPO
- ARGUS
- TTE GPRS Standard
- TTE GPRS Simple
- TP2000 (ver. 8.xx)



## ProsTE CABLE KIT



- Special cable kit for programming of Teletek Electronics' panels and modules:
  - Cable converter USB to RS232
  - Interface cable to RS232