

Technical Specifications

System Information		Alarm and Event	
CPU	Multimedia SoC (System-on-Chip)	Alarm Triggers	Video motion detection, manual trigger, digital input, periodical trigger, system boot, recording notification, camera tampering detection
Flash	128 MB	Alarm Events	Event notification using digital output, HTTP, SMTP, FTP and NAS server
RAM	256 MB		File upload via HTTP, SMTP, FTP and NAS server
Camera Features		General	
Image Sensor	1/2.7" Progressive CMOS	Smart Focus System	Remote focus & easy focus
Maximum Resolution	1920x1080	Connectors	RJ-45 for network/PoE connection Audio input/output AV output AC 24V power input DC 12V power input Digital input*1 Digital output*1
Lens Type	Vari-focal, remote focus	LED Indicator	System power and status indicator
Focal Length	f = 3 ~ 9 mm	Power Input	12V DC 24V AC IEEE 802.3af PoE Class 3
Aperture	F1.2 (wide), F2.1 (tele)	Power Consumption	DC 12V: 6.9W PoE: 9.3W AC 24V: 8.5W
Auto-iris	DC-iris	Dimensions	Ø: 173 mm x 115 mm
Field of View	38° ~ 104° (horizontal) 22° ~ 71° (vertical) 43° ~ 111° (diagonal)	Weight	Net: 1220 g
Shutter Time	1/5 sec. to 1/32,000 sec.	Casing	Vandal-proof IK10-rated metal housing Weather-proof IP66-rated housing
WDR Technology	WDR Enhanced	Safety Certifications	CE, LVD, FCC Class A, VCCI, C-Tick, UL
Day/Night	Removable IR-cut filter for day & night function	Operating Temperature	Start Temperature: -10°C ~ 50°C (14°F ~ 122°F) Working Temperature: -20°C ~ 50°C (-4°F ~ 122°F)
Minimum Illumination	0.08 Lux @ F1.2, 50 IRE (color) 0.001 Lux @ F1.2, 50 IRE (B/W)	Warranty	36 months
Pan Range	360°	System Requirements	
Tilt Range	180°	Operating System	Microsoft Windows 7/Vista/XP/2000
Rotation Range	360°	Web Browser	Mozilla Firefox 7~10 (streaming only) Internet Explorer 7.x or 8.x
Pan/tilt/zoom	ePTZ:	Other Players	VLC: 1.1.11 or above QuickTime: 7 or above
Functionalities	48x digital zoom (4x on IE plug-in, 12x built-in)	Included Accessories	
IR Illuminators	Built-in IR illuminators, effective up to 15 meters IR LED*8	CD	User's manual, quick installation guide, Installation Wizard 2, ST7501 32-channel recording software
On-board Storage	MicroSD/SDHC/SDXC card slot	Others	Quick installation guide, warranty card, mounting plate, alignment sticker, ceiling hole template sticker, L-type hex key wrench, silica gel, screws, hex nut, double-sided tape, AV cable, waterproof connector & bushing, software CD
Video		Dimensions	
Compression	H.264, MJPEG & MPEG-4		
Maximum Frame Rate	H.264: 30 fps at 1920x1080 MPEG-4: 30 fps at 1920x1080 MJPEG: 30 fps at 1920x1080		
Maximum Streams	4 simultaneous streams		
S/N Ratio	Above 52 dB		
Dynamic Range	55 dB		
Video Streaming	Adjustable resolution, quality and bitrate Configurable video cropping for bandwidth saving		
Image Settings	Adjustable image size, quality and bit rate Time stamp, text overlay, flip & mirror Configurable brightness, contrast, saturation, sharpness, white balance, exposure control, gain, backlight compensation, privacy masks Scheduled profile settings		
Audio			
Audio Capability	Audio input/output (Full duplex)		
Compression	GSM-AMR, AAC, G.711		
Interface	External microphone input External line output		
Network			
Users	Live viewing for up to 10 clients		
Protocols	IPv4, IPv6, TCP/IP, HTTP, HTTPS, UPnP, RTSP/RTP/RTCP, IGMP, SMTP, FTP, DHCP, NTP, DNS, DDNS, PPPoE, CoS, QoS, SNMP, 802.1X 10Base-T/100 BaseTX Ethernet (RJ-45)		
Interface	10Base-T/100 BaseTX Ethernet (RJ-45)		
ONVIF	Supported, specification available at www.onvif.org		
Intelligent Video			
Video Motion Detection	Triple-window video motion detection		

Compatible Accessories

Mounting Kits Corner mount 	Junction Box 	Pendant Mount 	Power Adapter AA-221 DC 12V Power Adapter 	AA-341 AC 24V Power Adapter
Pole Mount 	Wall Mount 	Adapter 	PoE Kits POE-IJ-1748NDN 802.3af Compliant PoE Injector 	Others AI-102 IR illuminators

All specifications are subject to change without notice. Copyright © 2013 VIVOTEK INC. All rights reserved.

Distributed by:



VIVOTEK INC.
6F, No. 192, Lien-Cheng Rd., Chung-Ho, New Taipei City, 235, Taiwan, R.O.C.
| T: +886-2-82455282 | F: +886-2-82455532 | E: sales@vivotek.com

VIVOTEK USA, INC.
2050 Ringwood Avenue, San Jose, CA 95131
| T: 408-773-8686 | F: 408-773-8298 | E: salesusa@vivotek.com

Ver 1.0



Fixed Dome Network Camera FD8363



Full HD • Smart Focus System •
Smart IR • IP66 • Vandal-proof

VIVOTEK FD8363 is a professional outdoor dome network camera, offering 2-Megapixel or 1080p Full HD resolution with superb image quality up to 30 fps. As with other true day/night models, the camera comes with a removable IR-cut filter and 15-meter IR illuminators to provide great clarity 24 hours a day. It is especially suitable for monitoring wide open outdoor areas such as building entrances, airports, or applications requiring accurate identification.

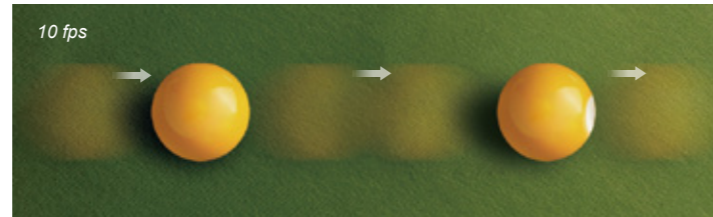
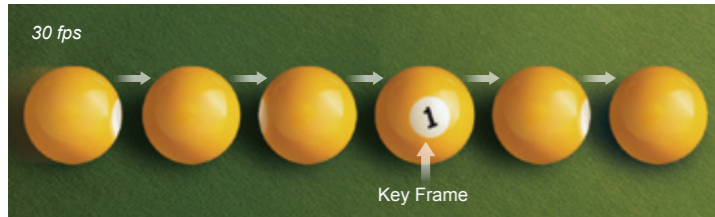
For installers, properly adjusting the focus of a megapixel network camera can be difficult due to the image detail. Thus, VIVOTEK has introduced the revolutionary Smart Focus System, including Easy Focus Button and Remote Focus to make installation and image adjustment easier. VIVOTEK has adopted lenses with a built-in stepper motor that the installer can use to remotely control the focal length and precisely adjust the camera focus, offering hassle-free installation and maintenance.

The IP66-rated housing is designed to help the camera body withstand rain and dust and ensures operation under a multitude of harsh weather conditions, while its metal vandal-proof housing effectively provides robust protection from vandalism. With other advanced features such as WDR enhanced, tamper detection, 802.3af compliant PoE, microSD/SDHC/SDXC card slot for on-board storage, video cropping, and e-PTZ functionality, the FD8363 provides the most robust solution suitable for demanding outdoor environments.

SUPREME

1080p Resolution at Full Frame Rate

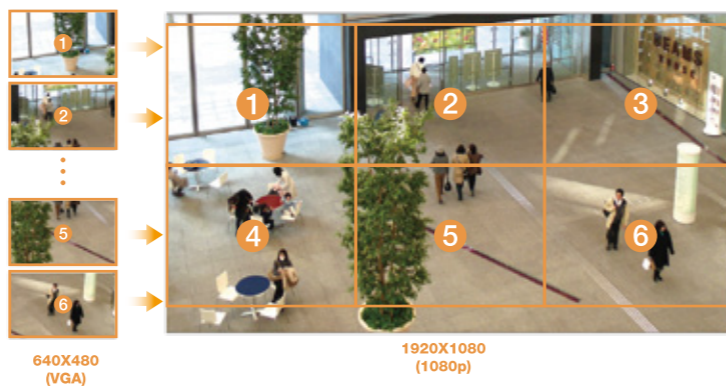
The VIVOTEK FD8363 is able to transmit 30 fps @ 1080p with H.264 compression, while conventional megapixel cameras generally only achieve 10 to 15 fps due to hardware limitations. The ability to view and record footage at a full frame rate enables much more effective surveillance.



For example, if a person or object of interest passes quickly through the camera's field of view during an event, a 10 fps frame rate might mean only a single frame with the target is captured, while the FD8363 would capture three frames, providing a fuller record of the event and more reliable identification of the target.

Wide Coverage, Exceptional Details

Compatible with the HDTV (16:9) standard, the FD8363 provides surveillance coverage for an area up to six times larger than possible with a VGA camera, significantly reducing the number of cameras required.



The FD8363 is especially well suited to monitor broad spaces such as shopping mall, airport, and hotel lobby, etc. In addition, it is excellent for applications requiring accurate recognition for post-content analysis, such as the identification of people or license plates.

Consistent Surveillance Performance

• Adapted for High-contrast Lighting Conditions

When a camera is used in a high contrast, backlight, glare, or light reflective environment such as a building entrance, ATM, or window, a subject may appear dark and unrecognizable. WDR Enhanced technology compensates for the unbalanced lighting, restoring detail throughout the field of view, so as to give user unparalleled visibility to identify images.



• Smart IR

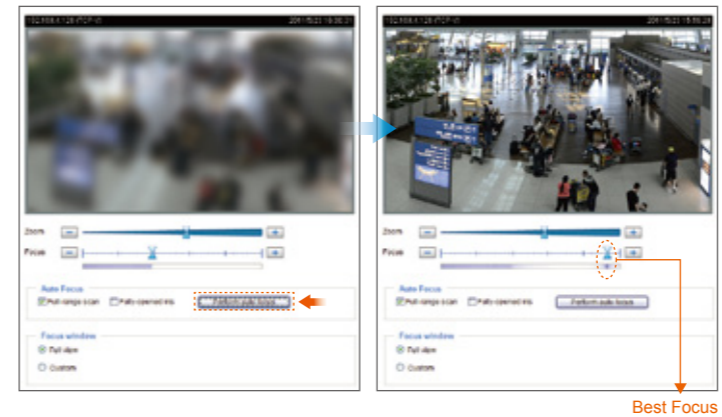
When the Smart IR function is enabled, the camera automatically adjusts the IR lighting intensity in order to avoid overexposure in night mode and is highly beneficial in capturing usable video when the object of interest is close to the camera and IR LEDs.



Smart Focus System

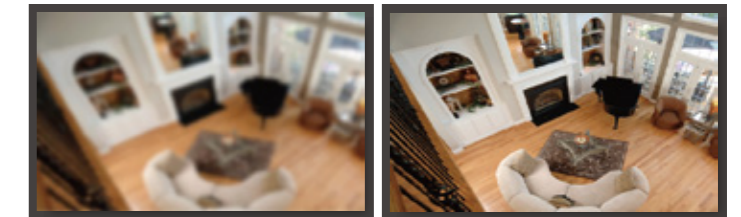
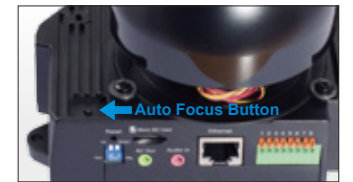
• Remote Focus

To facilitate easier installation and adjustment, the FD8363 has adopted a lens with a built-in stepper motor that the installer can use to remotely control the focal length and precisely adjust the camera focus via the configuration webpage.



• Easy Focus

The installer can also easily adjust the focus by pushing the auto focus button on camera body. The lens module will automatically adjust the focus to the best value, offering hassle-free installation and maintenance.



Enhanced Security

• Vandal-proof IK10-rated Housing

Equipped with a protective housing, the FD8363 are secured from vandalism, making it suitable for high-risk environments. The metal base and polycarbonate cover enable the FD8363 to withstand high impacts, thereby ensuring functional operation at all times.



• IP66-rated Housing

The weather-proof IP66-rated housing provides protection from dust and moisture, allowing the FD8363 to operate outdoors without any worries.

FD8363 | Fixed Dome Network Camera

- 2-Megapixel CMOS Sensor
- 30 fps @ 1920x1080
- 3 ~ 9 mm Motorized, DC-iris Lens
- Removable IR-cut Filter for Day & Night Function
- Built-in IR Illuminators, Effective up to 15 Meters
- Built-in Smart IR to Avoid Overexposure
- WDR Enhancement for Unparalleled Visibility in High Contrast Environments
- Real-time H.264, MPEG-4, and MJPEG Compression (Triple Codec)
- Smart Focus System for Remote and Easy Focus Adjustment
- Vandal-proof IK10-rated and Weather-proof IP66-rated Housing
- Built-in 802.3af Compliant PoE
- Built-in MicroSD/SDHC/SDXC Card Slot for On-board Storage

