



Ultra-mini Fixed Dome Network Camera FD8166



Stylish Design • Easy Installation

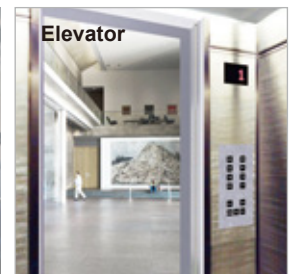
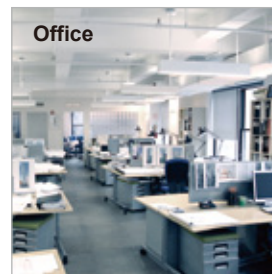
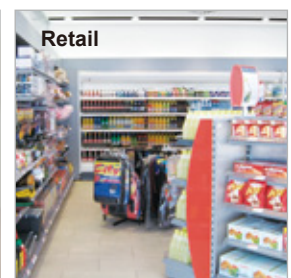
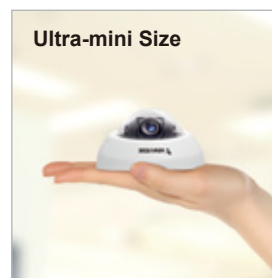
VIVOTEK FD8166 is the world's smallest network fixed dome camera. With installation as easy as one-two-three and Power over Ethernet (PoE) functionality, setup time is completed in less than 120 seconds, making installation quick and easy.

The FD8166 features a 2-Megapixel sensor enabling viewing resolution of 1920x1080 at 15 fps, and also supports the industry-standard H.264 compression technology, drastically reducing file sizes and conserving valuable network bandwidth. With MJPEG compatibility also included, video streams can also be transmitted in any of these formats for versatile applications.

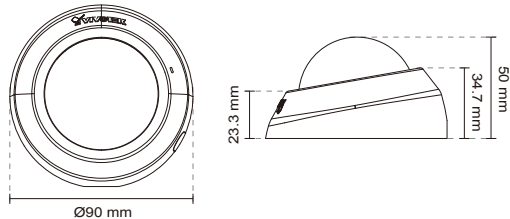
Designed with selectable focal lengths, FD8166 can be used in various environments, including but not limited to offices, elevators, campus, chain stores, boutique stores and health care facilities. At the size of only 90 mm in diameter, VIVOTEK FD8166 is truly an all-in-one surveillance solution that meets a wide variety of needs for indoor surveillance. The package also includes VIVOTEK's 32-channel recording software. With all this and more, the FD8166 is the ideal solution for your surveillance needs.

Features

- 2-Megapixel CMOS Sensor
- 15 fps @ 1920x1080
- Real-time H.264, MJPEG Compression (Dual Codec)
- Built-in IEEE 802.3af Compliant PoE
- Built-in MicroSD/SDHC Card Slot for On-board Storage
- Compact and Stylish Design
- Easy Installation



Technical Specifications

Models	FD8166-F2 (Lens f = 2.8mm) FD8166-F3 (Lens f = 3.6mm) FD8166-F6 (Lens f = 6mm)	Network	
System Information		Users	Live viewing for up to 10 clients
CPU	Multimedia SoC (System-on-Chip)	Protocols	IPv4, IPv6, TCP/IP, HTTP, HTTPS, UPnP, RTSP/RTP/RTCP, IGMP, SMTP, FTP, DHCP, NTP, DNS, DDNS, PPPoE, CoS, QoS, SNMP, 802.1X
Flash	16 MB	Interface	10Base-T/100 BaseTX Ethernet (RJ-45)
RAM	256 MB	ONVIF	Supported, specification available at www.onvif.org
Camera Features		Intelligent Video	
Image Sensor	1/2.7" Progressive CMOS	Video Motion Detection	Triple-window video motion detection
Maximum Resolution	1920x1080	Alarm and Event	
Lens Type	Fixed-focal	Alarm Triggers	Video motion detection, manual trigger, digital input, periodical trigger, system boot, recording notification, camera tampering detection
Focal Length	f = 2.8 mm (FD8166-F2) f = 3.6 mm (FD8166-F3) f = 6 mm (FD8166-F6)	Alarm Events	Event notification using HTTP, SMTP, FTP and NAS server File upload via HTTP, SMTP, FTP and NAS server
Aperture	F2.0 (FD8166-F2) F1.8 (FD8166-F3) F1.6 (FD8166-F6)	General	
Field of View	FD8166-F2: 121° (horizontal) 68° (vertical) 142° (diagonal) FD8166-F3: 98° (horizontal) 50° (vertical) 111° (diagonal) FD8166-F6: 56° (horizontal) 31° (vertical) 64° (diagonal)	Connectors	RJ-45 for Network/PoE connection Digital input*1
Shutter Time	1/5 sec. to 1/32,000 sec.	LED Indicator	System power and status indicator
Minimum Illumination	FD8166-F2: 0.24 Lux, 50 IRE FD8166-F3: 0.14 Lux, 50 IRE FD8166-F6: 0.18 Lux, 50 IRE	Power Input	IEEE 802.3af PoE Class 1
Pan Range	45°	Power Consumption	Max. 2.9W
Tilt Range	33° ~ 90°	Dimensions	Ø: 90 mm x 50 mm
Pan/tilt/zoom	ePTZ:	Weight	Net: 144g
Functionalities	48x digital zoom (4x on IE plug-in, 12x built-in)	Safety Certifications	CE, LVD, FCC Class B, VCCI, C-Tick
On-board Storage	MicroSD/SDHC/SDXC card slot	Operating Temperature	0°C ~ 50°C (32°F ~ 122°F)
Video		Warranty	24 months
Compression	H.264 & MJPEG	System Requirements	
Maximum Frame Rate	H.264: 15 fps at 1920x1080 30 fps at 1280x720 MJPEG: 15 fps at 1920x1080 30 fps at 1280x720	Operating System	Microsoft Windows 7/Vista/XP/2000
Maximum Streams	2 simultaneous streams	Web Browser	Mozilla Firefox 7~10 (streaming only) Internet Explorer 7.x or 8.x
S/N Ratio	Above 53dB	Other Players	VLC: 1.1.11 or above QuickTime: 7 or above
Video Streaming	Adjustable resolution, quality and bitrate Configurable video cropping for bandwidth saving	Included Accessories	
Image Settings	Adjustable image size, quality and bit rate Time stamp, text overlay, flip & mirror Configurable brightness, contrast, saturation, sharpness, white balance, exposure control, gain, backlight compensation, privacy masks Scheduled profile settings	CD	User's manual, quick installation guide, Installation Wizard 2, ST7501 32-channel recording software
Audio		Others	Quick installation guide, warranty card, screws pack, focus kit
Audio Capability	Audio input	Dimensions	
Compression	G.711		
Interface	Built-in microphone		
Effective Range	5 meters		

Compatible Accessories

PoE Kits



POE-IJ-1748NDN
802.3af Compliant PoE Injector

All specifications are subject to change without notice. Copyright © 2013 VIVOTEK INC. All rights reserved.

Distributed by:



VIVOTEK INC.

6F, No.192, Lien-Cheng Rd., Chung-Ho, New Taipei City, 235, Taiwan, R.O.C.
|T: +886-2-82455282 | F: +886-2-82455532 | E: sales@vivotek.com

VIVOTEK USA, INC.

2050 Ringwood Avenue, San Jose, CA 95131
|T: 408-773-8686 | F: 408-773-8298 | E: salesusa@vivotek.com

Ver 1.0