



Fixed Dome Network Camera FD8131/31V



1MP • Vari-focal Lens •
Compact Design

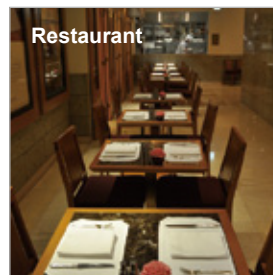
VIVOTEK FD8131/31V are easy-to-use fixed dome network cameras specifically designed for indoor security applications. Equipped with a 1MP sensor enabling viewing resolution of 1280x800 at 30 fps, users need to look no further for an all-in-one camera capable of capturing high quality HD video.

With the vari-focal lens, the FD8131/31V provide users the freedom to adjust the field of view in accordance with their applications. The IP66-rated housing of FD8131V protects the camera body against rain and dust and ensures operation under poor weather conditions. Furthermore, the metal vandal-proof housing effectively provides robust protection of FD8131V from vandalism.

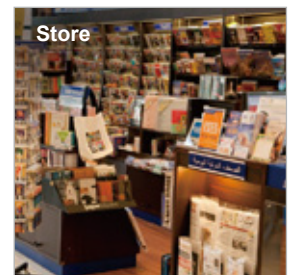
Also included are a number of advanced features standard on VIVOTEK cameras, including tamper detection, MicroSD/SDHC card slot, 802.3af compliant PoE, and VIVOTEK's 32-channel recording software. With all of these capabilities, the FD8131/31V present the best value in IP surveillance for indoor applications.

Features

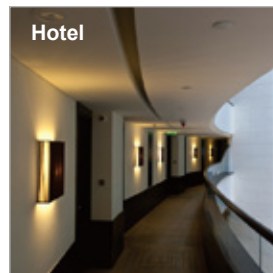
- 1-Megapixel CMOS Sensor
- 3 ~ 12 mm Vari-focal Lens
- Real-time H.264, MPEG-4 and MJPEG Compression (Triple Codec)
- Built-in 802.3af Compliant PoE
- Built-in MicroSD/SDHC Card Slot for On-board Storage
- 3-axis Mechanical Design for Ceiling and Wall Mount Installation
- Easy and Flexible Installation
- Compact, Elegant Design
- Vandal-proof IK10-rated and Weather-proof IP66-rated Housing (FD8131V)



Restaurant



Store



Hotel



On-board Storage

Technical Specifications

Models	FD8131 FD8131V	Alarm and Event	
System Information		Alarm Triggers	Video motion detection, manual trigger, digital input, periodical trigger, system boot, recording notification, camera tampering detection
CPU	Multimedia SoC (System-on-Chip)	Alarm Events	Event notification using digital output, HTTP, SMTP, FTP and NAS server File upload via HTTP, SMTP, FTP and NAS server
Flash	128 MB	General	
RAM	256 MB	Connectors	RJ-45 cable connector for Network/PoE connection Digital input*1 DC 12V power input
Camera Features		LED Indicator	System power and status indicator
Image Sensor	1/4" Progressive CMOS	Power Input	DC 12V IEEE 802.3af PoE Class 1
Maximum Resolution	1280x800	Power Consumption	Max. 3.84 W
Lens Type	Vari-focal	Dimensions	Ø: 110 mm x 91 mm (FD8131) Ø: 133 mm x 94 mm (FD8131V)
Focal Length	f = 3 ~ 12 mm	Weight	Net: 500 g (FD8131) Net: 589 g (FD8131V)
Aperture	F1.4 (wide), F2.0 (tele) (FD8131) F1.4 (wide), F3.2 (tele) (FD8131V)	Safety Certifications	CE, LVD, FCC Class B, VCCI, C-Tick
Field of View	FD8131: 61.34° ~ 24.13° (horizontal) 37.56° ~ 15.08° (vertical) 72.85° ~ 28.18° (diagonal) FD8131V: 60.06° ~ 20.26° (horizontal) 37.14° ~ 12.70° (vertical) 71.51° ~ 22.75° (diagonal)	Operating Temperature	Start Temperature: -10°C ~ 50°C (14°F ~ 122°F) Working Temperature: -20°C ~ 50°C (-4°F ~ 122°F)
Shutter Time	1/5 sec. to 1/32,000 sec.	Warranty	24 months
Minimum Illumination	0.38 Lux @ F1.4, 50 IRE (FD8131) 0.5 Lux @ F1.4, 50 IRE (FD8131V)	System Requirements	
Pan/tilt/zoom Functionalities	ePTZ: 16x digital zoom (4x on IE plug-in, 4x built-in)	Operating System	Microsoft Windows 7/Vista/XP/2000
On-board Storage	MicroSD/SDHC card slot	Web Browser	Mozilla Firefox 7~10 (streaming only) Internet Explorer 7.x or 8.x
Video		Other Players	VLC: 1.1.11 or above Quicktime: 7 or above
Compression	H.264, MJPEG & MPEG-4	Included Accessories	
Maximum Frame Rate	H.264: 30 fps at 1280x800 MPEG-4: 30 fps at 1280x800 MJPEG: 30 fps at 1280x800	CD	User's manual, quick installation guide, Installation Wizard 2, ST7501 32-channel recording software
Maximum Streams	4 simultaneous streams	Others	Quick installation guide, warranty card, alignment sticker, screws, software CD, RJ45 female/female coupler, clamp core screwdriver (FD8131V)
S/N Ratio	Above 53 dB	Dimensions	
Dynamic Range	47 dB		
Video Streaming	Adjustable resolution, quality and bitrate Configurable video cropping for bandwidth saving		
Image Settings	Adjustable image size, quality and bit rate Time stamp, text overlay, flip & mirror Configurable brightness, contrast, saturation, sharpness, white balance, exposure control, gain, backlight compensation, privacy masks Scheduled profile settings		
Network			
Users	Live viewing for up to 10 clients		
Protocols	IPv4, IPv6, TCP/IP, HTTP, HTTPS, UPnP, RTSP/RTP/RTCP, IGMP, SMTP, FTP, DHCP, NTP, DNS, DDNS, PPPoE, CoS, QoS, SNMP, 802.1X		
Interface	10Base-T/100 BaseTX Ethernet (RJ-45)		
ONVIF	Ver. 1.02		
Intelligent Video			
Video Motion Detection	Triple-window video motion detection		

Compatible Accessories

Mounting Kits



AM-517
Adaptor ring



AM-518
Dome adapter



AM-214
L shape bracket

Power Adapter



AA-221
DC 12V Power Adapter



MS-POE-IJAF
PoE injector, 802.3af compliant

All specifications are subject to change without notice. Copyright © 2012 VIVOTEK INC. All rights reserved.

Distributed by:



VIVOTEK INC.
6F, No.192, Lien-Cheng Rd., Chung-Ho, New Taipei City, 235, Taiwan, R.O.C.
|T: +886-2-82455282 | F: +886-2-8245532 | E: sales@vivotek.com

VIVOTEK USA, INC.
2050 Ringwood Avenue, San Jose, CA 95131
|T: 408-773-8886 | F: 408-773-8298 | E: salesusa@vivotek.com

Ver 1.0