



PowerVideo Plus – Hybrid Central Management Software

Features

- EverFocus Nevio & Nevio HD IP cameras and EverFocus H.264 Digital Video Recorders & Mobile Digital Video Recorders supported
- Easy installation with device search and batch installation (multiple IP cameras or DVRs can be installed in one step)
- Manual and schedule based recording
- Synchronous live streaming and recording supported
- Playback feature
- Snapshot feature
- Supports matrix live view screens
- Supports H.264 compression format for optimized space usage
- Dual-Stream support for balancing network bandwidth
- Selectable recording quality
- PTZ controls with USB joystick support
- Multiple view layout customization
- ARV & AVI archiving video formats supported
- Instant playback
- Multiple groups and flexible privileges of management
- Import / export configuration
- Drag&drop devices to live view from device list
- Scheduled DVR backup function
- Multi-monitor support:
Freeware version up to 2 monitors
No software limitation for "Pro" versions*



Minimum System Requirements

CPU	Intel Core 2 Duo (recommended: Intel I3 or better)
RAM	2 GB min. (recommended: 4 GB+)
Display	Intel onboard graphics (recommended: AMD / Nvidia DirectX 10 compliant graphics card)
Ethernet	10 / 100 (recommended: Gigabit)
Harddisk	50 MB programm installation + video storage
Operating system	Windows XP, Windows 7, Windows 8

Specifications

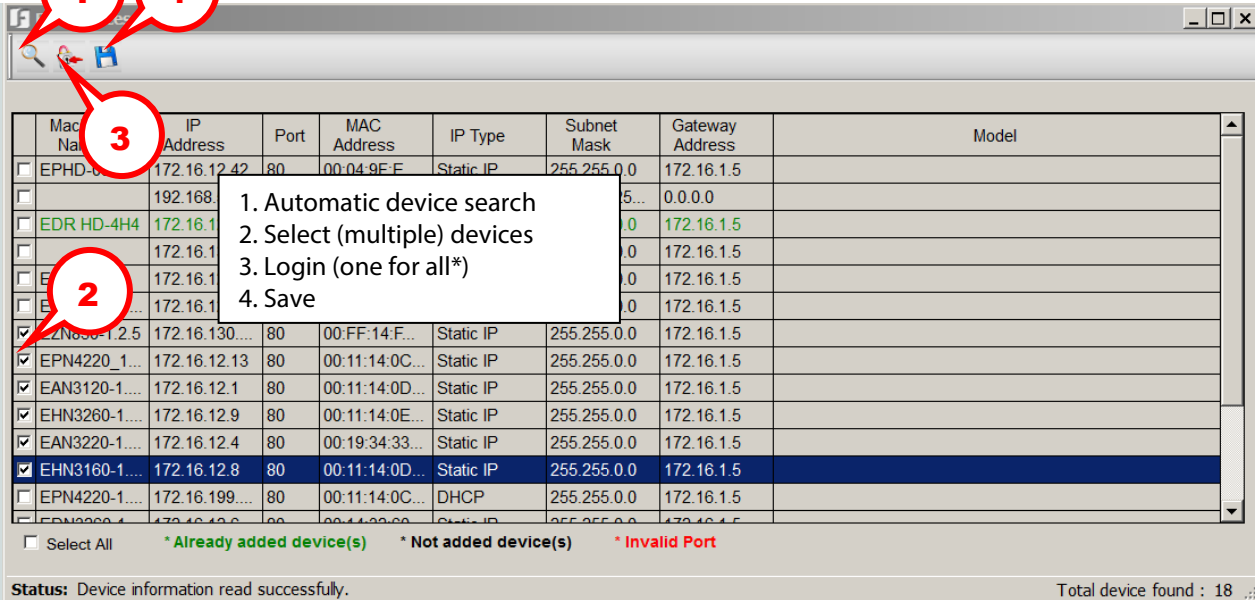
	PowerVideo Plus (Freeware)	PowerVideo Plus Pro-IP	PowerVideo Plus Pro-M
Device compatibility	EverFocus IP cameras, EverFocus (H.264) DVR (complete device list in release note)		
IP channels live view*	32 max.	unlimited	32 max.
IP channels recording/playback*	16 max.	unlimited	16 max.
DVR	20 max.	unlimited	20 max.
Mobile DVRs	8 max.	8 max.	unlimited
DVR live channels*	128 max.	unlimited	128 max.
Mobile DVR live channels*	64 max.	64 max.	unlimited
Total live channels*	128 max. (at 2 windows with 64 channels each)	unlimited	128 max. (at 2 windows with 64 channels each)
Multiview display	2	unlimited	unlimited
Multi-monitor support	Freeware: 2 max., resolution depending on monitor / graphics card specification "Pro" versions: no software limitation*		
Display modes	Full screen, sequence, 2x2, 3x3, 4x4, 5x5, 6x6, 7x7, 8x8 (for all windows)		
Audio	Alarm sounds and 2-way audio support		
Functions	E-map Instant playback Snapshot with snapshot log list Individual switching main / sub stream per channel Customization of 10 different layouts for multi-view windows Flexible user right management with individual function and device access assignment per user Scheduled archiving of DVR records Scheduled recording of IP cameras Network Alarm Backup/restore of PowerVideo settings PTZ control with USB-Joystick support (EKB-200, optional)		

* function requires specific PC + network preconditions – please contact your sales partner for further details!

PowerVideoPlus_db_en_rev03

Details

Easy batch installation in 4 steps:



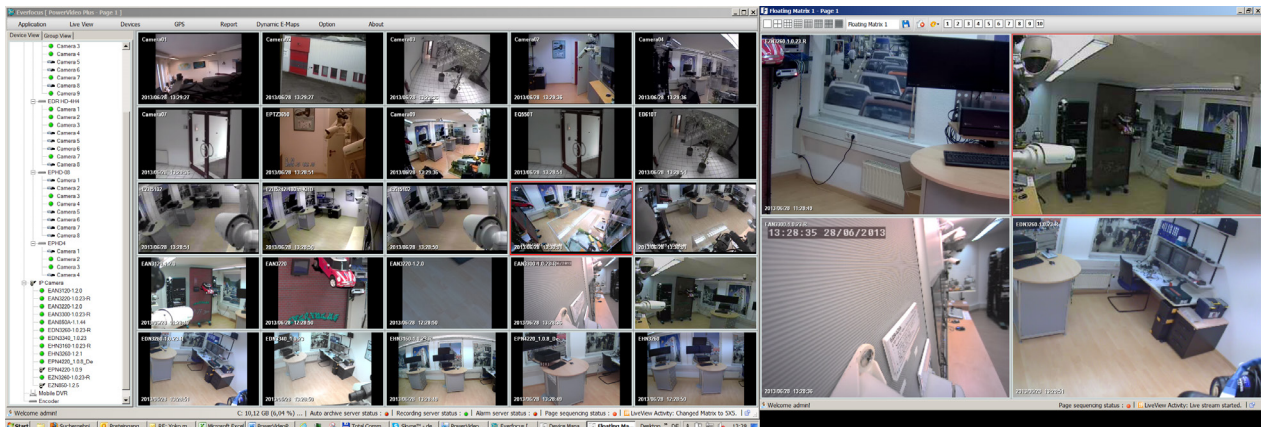
	Mac Address	IP Address	Port	MAC Address	IP Type	Subnet Mask	Gateway Address	Model
<input type="checkbox"/>	EPHD-...	172.16.12.42	80	00:04:9E:F...	Static IP	255.255.0.0	172.16.1.5	
<input type="checkbox"/>		192.168...						
<input type="checkbox"/>	EDR HD-4H4	172.16.1...					172.16.1.5	
<input type="checkbox"/>		172.16.1...					172.16.1.5	
<input type="checkbox"/>		172.16.1...					172.16.1.5	
<input type="checkbox"/>		172.16.1...					172.16.1.5	
<input checked="" type="checkbox"/>	EZNS-1.2.5	172.16.130...	80	00:FF:14:F...	Static IP	255.255.0.0	172.16.1.5	
<input checked="" type="checkbox"/>	EPN4220-1...	172.16.12.13	80	00:11:14:0C...	Static IP	255.255.0.0	172.16.1.5	
<input checked="" type="checkbox"/>	EAN3120-1...	172.16.12.1	80	00:11:14:0D...	Static IP	255.255.0.0	172.16.1.5	
<input checked="" type="checkbox"/>	EHN3260-1...	172.16.12.9	80	00:11:14:0E...	Static IP	255.255.0.0	172.16.1.5	
<input checked="" type="checkbox"/>	EAN3220-1...	172.16.12.4	80	00:19:34:33...	Static IP	255.255.0.0	172.16.1.5	
<input checked="" type="checkbox"/>	EHN3160-1...	172.16.12.8	80	00:11:14:0D...	Static IP	255.255.0.0	172.16.1.5	
<input type="checkbox"/>	EPN4220-1...	172.16.199...	80	00:11:14:0C...	DHCP	255.255.0.0	172.16.1.5	
<input type="checkbox"/>		172.16.199...	80					

☐ Select All * Already added device(s) * Not added device(s) * Invalid Port

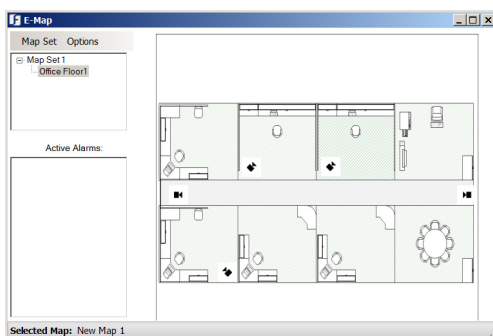
Status: Device information read successfully. Total device found : 18

*Requirement: identical user name / password for all selected devices

Operation with 2 video windows with up to 64 channels per window:

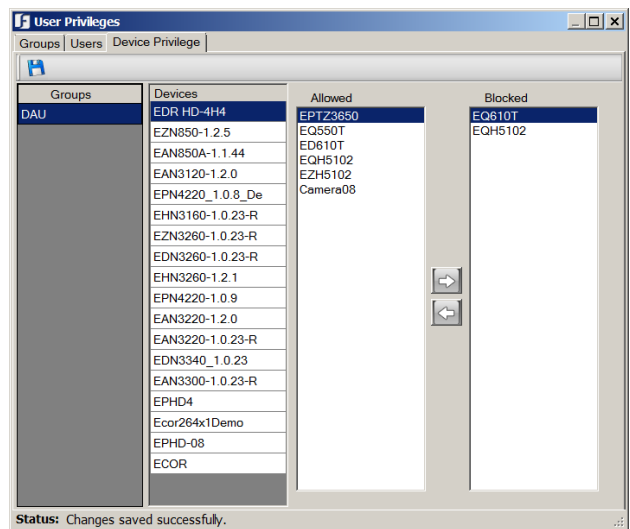
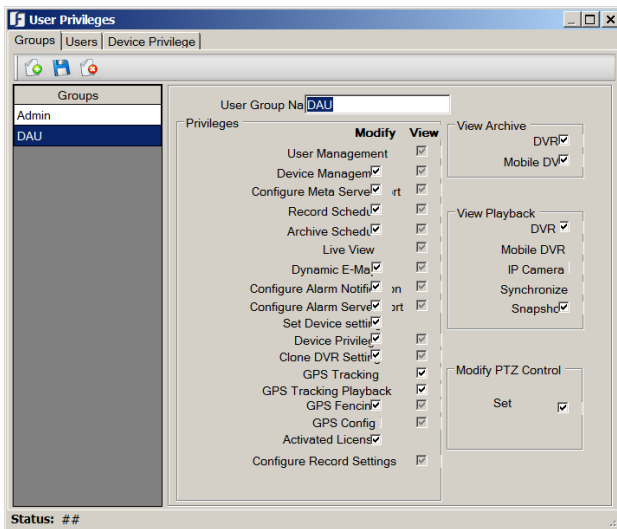


E-Map:

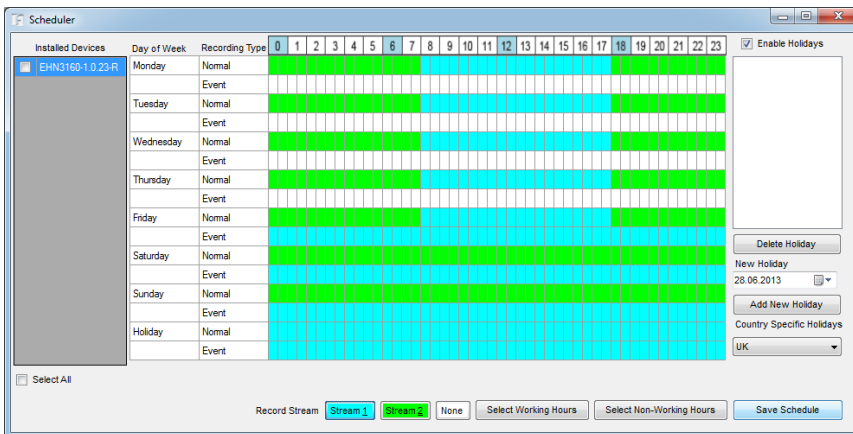


PowerVideoPlus_db_en_rev03

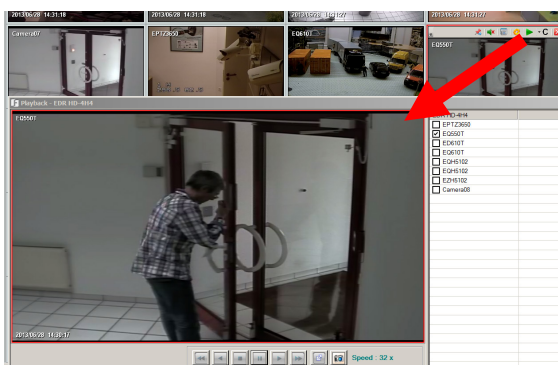
Flexible user right management with individual user right assignment for functions and devices:



Scheduled recording for IP cameras:



Instant playback function:



Ordering information

PowerVideo Plus	Central Management Software for IP cameras, DVRs and mobile DVRs – free software download available on www.everfocus.de (registration required)
PowerVideo Plus Pro-IP	Central Management Software for managing an unlimited number of IP cameras and DVRs as well as mobile DVRs (max. 8) – free software download; licensing through upgrade
PowerVideo Plus Pro-M	Central Management Software for managing an unlimited number of mobile DVRs as well as IP cameras (max. 32) and DVRs (max. 20) – free software download; licensing through upgrade