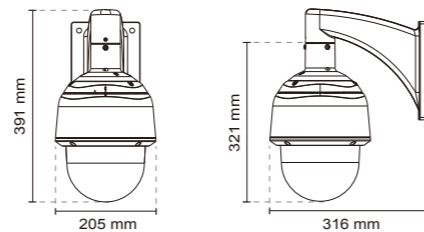


## Technical Specifications

|                               |  |
|-------------------------------|--|
| <b>Models</b>                 | SD8314E/SD8324E (18x zoom)<br>SD8316E/SD8326E (36x zoom)   |
| <b>System Information</b>     |  |
| CPU                           | Multimedia SoC (System-on-Chip)  |
| Flash                         | 128 MB   |
| RAM                           | 256 MB   |
| <b>Camera Features</b>        |  |
| Image Sensor                  | 1/4" Progressive CCD   |
| Maximum Resolution            | 720x480/NTSC (SD8314E/16E)<br>720x576/PAL (SD8324E/26E)  |
| Lens Type                     | 18x Optical Zoom (SD8314E/24E)<br>36x Optical Zoom (SD8316E/26E)<br>Auto Focus   |
| Focal Length                  | f = 4.1 ~ 73.8 mm (SD8314E/24E)<br>f = 3.4 ~ 122.4 mm (SD8316E/26E)  |
| Aperture                      | F1.4 ~ F3.0 (SD8314E/24E)<br>F1.6 ~ F4.5 (SD8316E/26E)   |
| Auto-Iris                     | DC-Iris  |
| Field of View                 | SD83x4E:<br>3° ~ 48° (Horizontal)<br>2° ~ 37° (Vertical)<br>4° ~ 58° (Diagonal)<br>SD83x6E:<br>2° ~ 58° (Horizontal)<br>1° ~ 44° (Vertical)<br>2° ~ 70° (Diagonal)   |
| Shutter Time                  | 1 sec. to 1/10,000 sec.  |
| WDR Technology                | WDR Pro  |
| Day/Night                     | Removable IR-cut filter for day & night function   |
| Minimum Illumination          | 0.01 Lux @ F1.4, 50IRE (Color)<br>0.001 Lux @ F1.4, 50 IRE (B/W) (SD8314E/24E)<br>0.01 Lux @ F1.6, 50IRE (Color)<br>0.001 Lux@F1.6, 50 IRE (B/W) (SD8316E/26E)   |
| Pan Speed                     | 0.05° ~ 450° / sec   |
| Pan Range                     | 360 endless  |
| Tilt Speed                    | 0.05° ~ 450° / sec   |
| Tilt Range                    | 220° (-110° ~ +110°)   |
| Preset Locations              | 256 preset locations   |
| Pan/tilt/zoom Functionalities | 48x digital zoom (4x on IE plug-in, 12x built-in)<br>Auto pan mode<br>Auto patrol mode   |
| On-board Storage              | SD/SDHC/SDXC card slot   |
| <b>Video</b>                  |  |
| Compression                   | H.264, MJPEG, MPEG-4   |
| Maximum Frame Rate            | 30 fps @ 720x480 (SD8314E/16E)<br>25 fps @ 720x576 (SD8324E/26E)<br>In all compression modes   |
| Maximum Streams               | 4 simultaneous streams   |
| S/N Ratio                     | Above 48 dB  |
| Dynamic Range                 | 72 dB  |
| Video Streaming               | Adjustable resolution, quality and bitrate   |
| Image Settings                | Adjustable image size, quality and bit rate<br>Time stamp, text overlay, flip & mirror<br>Configurable brightness, contrast, sharpness, white balance, exposure control, gain, backlight compensation, privacy masks (Up to 24)<br>Scheduled profile settings<br>Electrical Image Stabilizer (SD8316E/26E) |
| <b>Audio</b>                  |  |
| Audio Capability              | Two-way Audio (full duplex)  |
| Compression                   | GSM-AMR, AAC, G.711, G.726   |
| Interface                     | External microphone input<br>External line output  |
| <b>Network</b>                |  |
| Users                         | Live viewing for up to 10 clients  |
| Protocols                     | IPv4, IPv6, TCP/IP, HTTP, HTTPS, UPnP, RTSP/RTMP/RTCP, IGMP, SMTP, FTP, DHCP, NTP, DNS, DDNS, PPPoE, CoS, QoS, SNMP, 802.1X  |
| Interface                     | 10Base-T/100 BaseTX Ethernet (RJ-45)   |
| ONVIF                         | Supported, specification available at <a href="http://www.onvif.org">www.onvif.org</a>   |
| <b>Intelligent Video</b>      |  |
| Video Motion Detection        | Triple-window video motion detection   |
| Auto-Tracking                 | Auto-tracking on moving object   |
| <b>Alarm and Event</b>        |  |
| Alarm Triggers                | Video motion detection, manual trigger, periodical trigger, system boot, recording notification, camera tampering detection, audio detection   |
| Alarm Events                  | Event notification using digital output, HTTP, SMTP, FTP and NAS server<br>File upload via HTTP, SMTP, FTP and NAS server  |
| <b>General</b>                |  |
| Connectors                    | RJ-45 cable connector for Network/PoE connection<br>Audio input<br>Audio output<br>AC 24V power input<br>DC 12V power input<br>Digital input*4<br>Digital output*2<br>RS-485 for PTZ control (PelcoD protocol, Baud rate 2400)   |
| LED Indicator                 | System power and status indicator  |
| Power Input                   | PoE Plus (IEEE 802.3at compliant)<br>High Power PoE<br>AC 24V  |
| Power Consumption             | PoE Plus:<br>Max. 19W<br>AC 24V:<br>Max. 48W (heater on)<br>Max. 19W (heater off)<br>High Power PoE:<br>Max. 48W (heater on)<br>Max. 19W (heater off)  |
| Dimensions                    | Ø: 205 mm x 321 mm   |
| Weight                        | Net: 3.660 g   |
| Casing                        | Weather-proof IP66- and NEMA 4X-rated housing  |
| Safety Certifications         | CE, FCC Class A, VCCI, C-tick, NEMA 4X   |
| Operating Temperature         | -5°C ~ 55°C (PoE Plus)<br>-40°C ~ 55°C (AC 24V)<br>-40°C ~ 55°C (High Power PoE)   |
| Warranty                      | 36 months  |
| <b>System Requirements</b>    |  |
| Operating System              | Microsoft Windows 7/Vista/XP/2000  |
| Web Browser                   | Mozilla Firefox 7-10 (Streaming only)<br>Internet Explorer 7.x or 8.x  |
| Other Players                 | VLC: 1.1.11 or above<br>Quicktime: 7 or above  |
| <b>Included Accessories</b>   |  |
| CD                            | User's manual, quick installation guide, Installation Wizard 2, ST7501 32-channel recording software   |
| Others                        | Wall mount bracket, screws, waterproof connectors, terminal blocks, Ethernet cable, quick installation guide, warranty card, alignment sticker, T25 star driver, software CD, desiccant bag, ground wire   |
| <b>Dimensions</b>             |  |



# Speed Dome Network Camera SD83x4/x6E



D1 • 18x/36x Zoom • NEMA 4X • IP66 • Extreme Weatherproof • PoE Plus

VIVOTEK SD8314E/24E/16E/26E is part of the SUPREME series product line offering D1 resolution with superb image quality. Adopting a 18x/36x optical zoom lens, the SD8314E/24E/16E/26E is able to capture details at top-notch quality. The IP66- and NEMA 4X-rated housing protects the camera body against rain, dust, and corrosion within a wide temperature range of between -40°C to 55°C. This feature ensures operation under extreme weather conditions and hazardous environments. It is especially suitable for monitoring wide open indoor/outdoor spaces such as airports, highways and parking lots where high-level reliability and precision are always required.

The SD8314E/24E/16E/26E supports high-performance H.264/MPEG-4/MJPEG compression technology and offers extra smooth video quality with resolution up to 30 fps @ D1. Boasting WDR Pro Technology, the SD8314E/24E/16E/26E can also cope with challenging lighting conditions and generate image quality close to the capabilities of the human eye. With a sophisticated pan/tilt mechanism, the camera provides fast, precise movement with continuous 360-degree pan and 220-degree tilt. Users can also easily control the lens position via a mouse or a joystick to track the object of interest and set up to 256 preset positions for patrolling. With the built-in auto tracking feature, the SD8314E/24E/16E/26E provides instantaneous reaction to suspicious moving objects in wide area locations before operators are aware of activity.

As with all VIVOTEK true day/night cameras, the SD8314E/24E/16E/26E features a removable IR-cut filter, maintaining clear images 24 hours a day. With audio detection, by recognizing increases or decreases in sound volume, an additional layer of intrusion detection is ensured. With other advanced features such as SD/SDHC/SDXC card slot, 802.3at compliant PoE Plus and 30 fps high quality video, the SD8314E/24E/16E/26E is the best choice for the most demanding outdoor surveillance applications.

## Compatible Accessories

|                      |   |  |  |  |  |
|----------------------|---|--|--|--|--|
| <b>Mounting Kits</b> |   |  |  |  |  |
|                      | <b>AM-103</b><br>Recessed kit                   |  | <b>AM-116</b><br>20 cm pendant pipe      |  | <b>AM-117</b><br>40 cm pendant pipe      |
|                      | <b>AM-118</b><br>Indoor pendant head            |  | <b>AM-231</b><br>Parapet mounting kit    |  | <b>AM-221</b><br>Goose neck mounting kit |
| <b>Mounting Kits</b> |   |  |  |  |  |
|                      | <b>AM-311</b><br>Pole Mount Adaptor             |  | <b>AM-411</b><br>Corner Mount Adaptor    |  | <b>AM-711</b><br>Junction Box            |
|                      | <b>AM-114</b><br>Outdoor pendant Head           |  | <b>AM-519</b><br>1.5" PT adapter         |  | <b>AA-341</b><br>AC 24V power adapter    |
| <b>PoE Kits</b>      |   |  |  |  |  |
|                      | <b>AP3001</b><br>PoE plus injector              |  | <b>AP-331</b><br>High power PoE injector |  | <b>AC-212</b><br>Smoked cover            |
|                      | <b>AC-111</b><br>Vandal-proof transparent cover |  | <b>AO-001</b><br>Combo cable             |  | <b>IPD-USB</b><br>USB Joystick           |

All specifications are subject to change without notice. Copyright © 2013 VIVOTEK INC. All rights reserved.

Distributed by:



VIVOTEK INC.  
6F, No.192, Lien-Cheng Rd., Chung-Ho, New Taipei City, 235, Taiwan, R.O.C.  
| T: +886-2-82455282 | F: +886-2-82455532 | E: sales@vivotek.com

VIVOTEK USA, INC.  
2050 Ringwood Avenue, San Jose, CA 95131  
| T: 408-773-8886 | F: 408-773-8298 | E: salesusa@vivotek.com

Ver 1.0

**SUPREME**

## Detailed Images of Distant Objects

Utilizing a 18x/36x optical zoom lens, the SD8314E/24E (18x), SD8316E/26E (36x) provides close-up images with exceptional detail and effectively extends the user's viewing distance. Users can easily and quickly zoom in on distant objects or minute details with precision and quality, even at from far away.



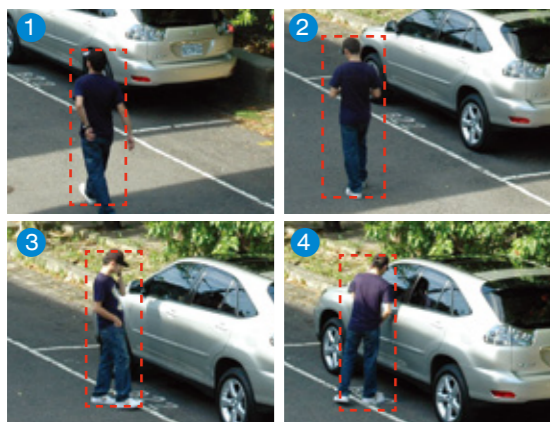
## Advanced Mechanism

SD8314E/24E/16E/26E has a pan range of 360° and tilt range of 220°. With the additional 20° tilt range, the SD8314E/24E/16E/26E is able to expand the viewing range to the field above the normal horizontal view. Additionally, the SD8314E/24E/16E/26E is built with QuickPan technology, allowing for 360° endless panning at a speed of 450° per second. This allows users to quickly direct the camera lens to catch any object of interest in the field of view surrounding the camera.



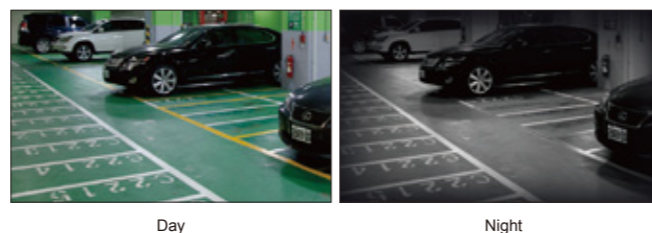
## Auto Tracking for Moving Objects

The auto tracking feature provides instantaneous reaction to suspicious moving objects over a wide area before an operator may be aware of activity. Users are able to define the target object size in order to render auto tracking more effectively.



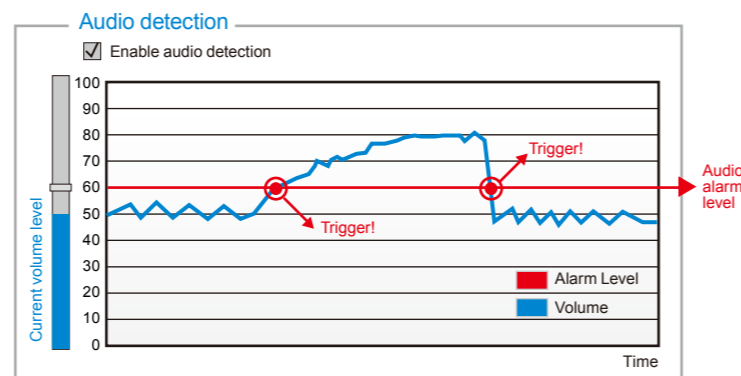
## Clear Images 24/7

The SD8314E/24E/16E/26E deliver day & night functionality with a built-in removable IR-cut filter. By day, the IR-cut filter screens out infrared light to reduce color distortion, and at night, the filter is removed to accept infrared light for higher lighting efficiency.



## Audio Detection for Instant Alerts

The audio detection feature enables an event trigger when a sudden, unexpected increase or decrease in sound volume occurs so as to alert users of a possible emergency situation.

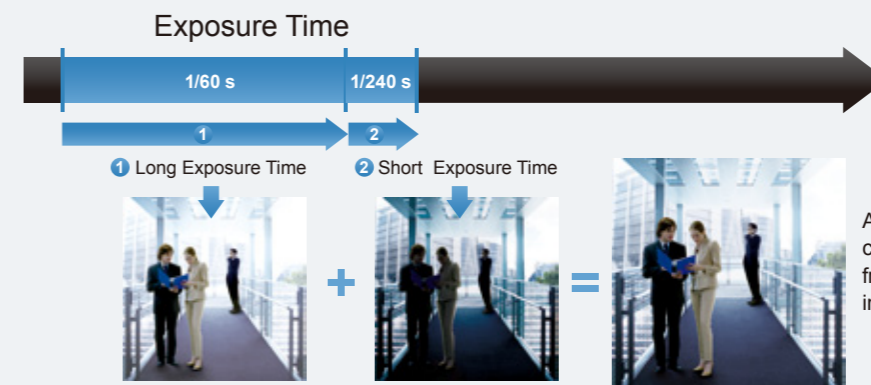


## Unparalleled Visibility in High Contrast Environments

When a camera is used in a high contrast, backlight, glare or light reflective environment, such as a building entrance, ATM or window, an object may appear dark and unrecognizable. WDR (Wide Dynamic Range) technology compensates for the unbalanced lighting, restoring the details throughout the field of view. With this feature, the SD8314E/24E/16E/26E is able to maintain image quality even under challenging light conditions.

### • WDR Pro

WDR Pro works by capturing alternate frames using different exposure times. An image signal processor (ISP) then uses a sophisticated algorithm to seamlessly combine the optimal portions of these two complementary frames to create a composite frame that retains details in both the dark and bright areas of the field of view.



## Extreme Weatherproof

### • Wide Temperature Range

The wide temperature range (-40°C ~ 55°C) enhances the SD8314E/24E/16E/26E's performance and reliability under extremely harsh weather conditions.



### • IP66-rated and NEMA 4X Housing

The weather-proof IP66- and NEMA 4X-rated housing protects the camera from rain, dust, and corrosion, allowing the device to operate outdoors under a multitude of weather conditions.



## SD83x4E/x6E | Speed Dome Network Camera

- D1 SONY Exview HAD CCD Sensor
- 30 fps @ D1
- 18x / 36x Zoom Lens
- WDR Pro for Unparalleled Visibility in High Contrast Environments
- Removable IR-cut Filter for Day & Night Function
- 360° Continuous Pan and 220° Tilt
- Real-time H.264, MPEG-4 and MJPEG Compression (Triple Codec)
- Weather-proof IP66-rated and NEMA4X Housing
- -40°C ~ 55°C Wide Temperature Range for Extreme Weather Conditions
- Audio Detection for Instant Alerts
- Auto tracking for Moving Objects
- Built-in 802.3at Compliant PoE Plus
- 3D Privacy Masks for Additional Protection
- Built-in SD/SDHC/SDXC Card Slot for On-board Storage

