

FD8168

Ultra-mini Fixed Dome Network Camera



2MP · Full HD · Ultra-Mini Size · Easy Installation

VIVOTEK FD8168 is an ultra-mini fixed dome network camera, specially designed for indoor applications in which camera appearance is cared, such as luxury stores, antique stores and cloth shops.

The FD8168 is equipped with a 2-megapixel sensor and the ability to output 15 frames per second in H.264 compression. It includes multiple streams with different settings and applications, such as recording or live viewing.

Users can also benefit from simple installation with the compact housing and standard PoE power input design, as well as a MicroSD card slot for local storage use.

Key Features

- 2-Megapixel CMOS Sensor
- 15 fps @ 1920x1080; 30 fps @ 1280x720
- Real-time H.264, MJPEG Compression (Dual Codec)
- Built-in IEEE 802.3af Compliant PoE
- Built-in MicroSD/SDHC/SDXC Card Slot for On-board Storage
- Ultra-mini Size Design
- Easy Installation

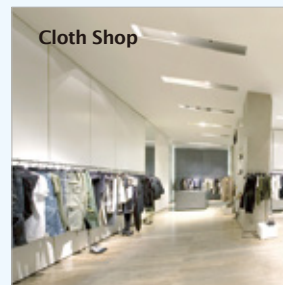
Ultra-mini Size



Convenience Store



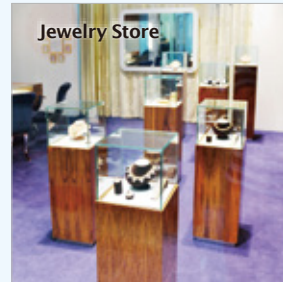
Cloth Shop



Fast Food Restaurant



Jewelry Store



Technical Specifications

| | | | |
|---------------------------|--|--|--|
| Model | FD8168 | Intelligent Video | |
| System Information | | Video Motion Detection | Triple-window video motion detection |
| CPU | Multimedia SoC (System-on-Chip) | Alarm and Event | |
| Flash | 16MB | Alarm Triggers | Video motion detection, manual trigger, digital input, periodical trigger, system boot, recording notification, camera tampering detection |
| RAM | 256MB | Alarm Events | Event notification using digital output, HTTP, SMTP, FTP and NAS server File upload via HTTP, SMTP, FTP and NAS server |
| Camera Features | | General | |
| Image Sensor | 1/2.7" Progressive CMOS | Connectors | RJ-45 for Network/PoE connection |
| Maximum Resolution | 1920x1080 | LED Indicator | System power and status indicator |
| Lens Type | Fixed-focal | Power Input | IEEE 802.3af PoE Class 1 |
| Focal Length | f = 3.6 mm | Power Consumption | Max. 2.3 W |
| Aperture | F 1.8 | Dimensions | Ø: 62 mm x 50 mm (with bracket) Ø: 62 mm x 45 mm (w/o bracket) |
| Field of View | 97° (horizontal) 52° (vertical) 113° (diagonal) | Weight | Net: 80 g |
| Shutter Time | 1/5 sec. to 1/32,000 sec | Safety Certifications | CE, LVD, FCC Class B, VCCI, C-Tick |
| Minimum Illumination | 0.58 Lux @ F1.8 | Operating Temperature | Starting Temperature: -10°C ~ 40°C (14°F~ 104°F) Working Temperature: -20°C ~ 40°C (-4°F~ 104°F) |
| Tilt Range | 90° | Warranty | 24 months |
| On-board Storage | MicroSD/SDHC/SDXC card slot | System Requirements | |
| Video | | Operating System | Microsoft Windows 7/Vista/XP/2000 |
| Compression | H.264 & MJPEG | Web Browser | Mozilla Firefox 7~10 (streaming only) Internet Explorer 7.x, 8.x, 9.x, 10.x |
| Maximum Frame Rate | 15 fps @ 1920x1080 30 fps @ 1280x720 In both compression | Other Players | VLC: 1.1.11 or above QuickTime: 7 or above |
| Maximum Streams | 3 simultaneous streams | Included Accessories | |
| S/N Ratio | Above 53 dB | Others | Quick installation guide, warranty card, alignment sticker, ceiling mount bracket, wall-mount bracket |
| Video Streaming | Adjustable resolution, quality and bitrate Configurable video cropping for bandwidth saving | Dimensions | |
| Image Settings | Adjustable image size, quality and bit rate Time stamp, text overlay, flip & mirror Configurable brightness, contrast, saturation, sharpness, white balance, exposure control, gain, backlight compensation, privacy masks Scheduled profile settings |  | |
| Network | | | |
| Users | Live viewing for up to 10 clients | | |
| Protocols | IPv4, IPv6, TCP/IP, HTTP, HTTPS, UPnP, RTSP/RTP/RTCP, IGMP, SMTP, FTP, DHCP, NTP, DNS, DDNS, PPPoE, CoS, QoS, SNMP, 802.1X, UDP, ICMP | | |
| Interface | 10Base-T/100 BaseTX Ethernet (RJ-45) | | |
| ONVIF | Supported, specification available at www.onvif.org | | |

Compatible Accessories

PoE Kits



POE-IJ-1748NDN
802.3af Compliant PoE Injector



AW-FED-0500
4-port Unmanaged PoE Switch

All specifications are subject to change without notice. Copyright © VIVOTEK INC. All rights reserved.

Distributed by:



VIVOTEK INC.
6F, No.192, Lien-Cheng Rd., Chung-Ho,
New Taipei City, 235, Taiwan, R.O.C.
T: +886-2-82455282 F: +886-2-82455532
E: sales@vivotek.com

VIVOTEK USA
2050 Ringwood Avenue,
San Jose, CA 95131
T: 408-773-8686 F: 408-773-8298
E: salesusa@vivotek.com

VIVOTEK Europe
Randstad 22-133, 1316BW Almere,
The Netherlands
T: +31(0)36-5298-434
E: sales europe@vivotek.com

Ver 1.3