

AW-GEV Series

VivoCam Layer 2 Managed PoE Switch



Managing IP Surveillance · Managed L2 Gigabit PoE Switch

The VIVOTEK AW-GEV series, referred to as VivoCam PoE switch, is the world's first PoE switch with IP surveillance management functions. This switch is not only a standard L2 PoE switch, but also able to set up and configure VIVOTEK IP cameras, NVR and CMS. With single AW-GEV series, the VivoCam PoE switch allows users to find all VIVOTEK devices and deploy a surveillance network system automatically.

The AW-GEV series also features Graphic View, such as Topology/Map view for controlling and understanding network structure and device situation, and Google Map integration to view system situation status for outdoor applications. It not only features surveillance network environment set up functions, but troubleshooting and traffic monitoring functions also help users to clarify and troubleshoot any connection or device issue. In addition, users can also back up their IP camera configuration files, and batch re-boot/re-store camera device through the VivoCam PoE switch. With all of these features and more, the AW-GEV series is the best PoE solution to install and manage your VIVOTEK devices.

Features

Managing IP Surveillance

- The Root VivoCam Will Auto-Sync With All Sub VivoCam Switches
- Auto Discovery and Classification of Network Devices
- Batch Camera/Video Server F/W Upgrade
- Batch Camera Configuration-File Import & Export
- Batch Camera Network/Login Configuration
- Auto Generated Surveillance Topology View
- Easy Tag VLAN Configuration In Topology View
- Smart Device-Management In Topology View
- PoE On/Off Control and Ping Check In Topology View
- Display IP Camera Live Stream in Topology View, Floor View and Google Map View
- Supports Surveillance QoS and Mac-Lock Security

Managed L2 PoE Switch

- Supports L2 Plus Management
- Supports DHCP Server & Client
- Supports IPv4 Static Route
- Supports IEEE802.1Q VLAN(up to 4096), Double Tag (Q-in-Q)
- Supports IEEE802.1v Protocol VLAN and MAC-based VLAN
- Supports 802.1d (STP), 802.1w (RSTP) and 802.1s (MSTP)
- Supports LACP and Static Link Aggregation
- Supports SNMP v1/v2c/v3 for Management
- Supports HTTPs/SSL/SSHv1&v2 for Secured Connection
- Supports Dual Image for Switch Firmware Backup
- Supports Ethernet Cable Length Detection

Auto Discovery

AW-GEV series can automatically discover any VIVOTEK's devices such as network cameras, video servers, CMS and NVR with a simple click of mouse.

Camera & Encoder Device List

Auto-refresh

100 ON-LINE 7 OFF-LINE 08 MANAGED 47 UN-MANAGED

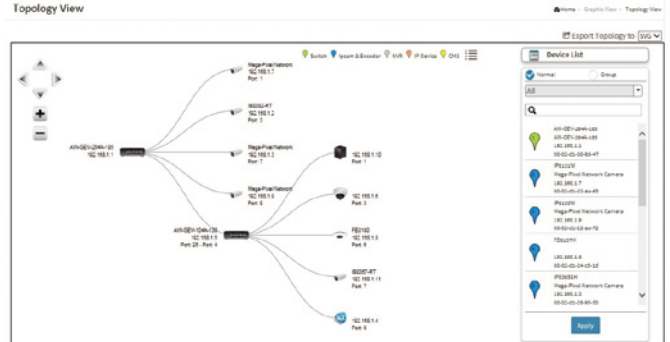
Show entries

Select	Status	Model Name	Device Name	MAC	IP Address	IP State	Version
<input type="checkbox"/>	On Line	IP8162	Mega-Pixel Network Camera	00-02-D1-26-D1-68	169.254.1.104	Static	0200d
<input type="checkbox"/>	On Line	CC8130	CC8130	00-02-D1-1D-21-83	169.254.33.131	Static	0201a
<input type="checkbox"/>	On Line	IB8369	IB8369	00-02-D1-35-2D-E8	169.254.45.232	Static	0101a1
<input type="checkbox"/>	On Line	IP8371E	IP8371E	00-02-D1-29-40-8F	169.254.64.143	Static	0301b
<input type="checkbox"/>	On Line	FD816C-HSF2	FD816C-HSF2	00-02-D1-39-5C-EE	169.254.92.238	Static	0100v_2
<input type="checkbox"/>	On Line	IP8337H	IP8337H-C	00-02-D1-25-BA-95	169.254.185.149	Static	0100f
<input type="checkbox"/>	On Line	FD8151V	Mega-Pixel Network Camera	00-02-D1-27-C4-50	169.254.195.80	Dynamic	0103a
<input type="checkbox"/>	On Line	FE8171		00-02-D1-15-D7-41	192.168.40.11	Dynamic	0101c
<input type="checkbox"/>	On Line	FD8168-S	Mega-Pixel Network Camera	00-02-D1-19-00-C6	192.168.40.12	Dynamic	0100b6

Graphic View

Topology View

Auto-generated Topology View allows administrators to quickly view and export a complete network topology in SVG/PNG/PDF format for easier inspection and planning.



Graphic View

Floor View

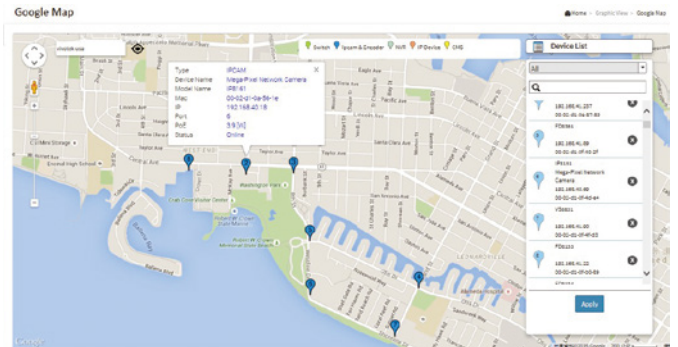
Upload custom floor images. Floor View allows for quick location of deployed surveillance devices and for export of this view in SVG/PNG/PDF format for easier inspection and planning.



Graphic View

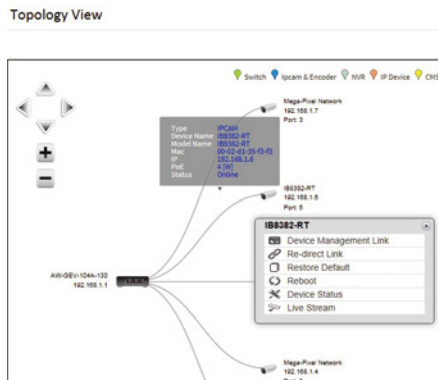
Google Map

Locate surveillance devices on Google map to simplify multi-site management of any large scale deployments.



Device Management

Easy Network Configuration, Open Device Web UI, Restore Default, Reboot, Check Device Cable Connection and Display Live Stream, Online/Offline status, PoE consumption, PoE on/off control, PoE Alive Check.



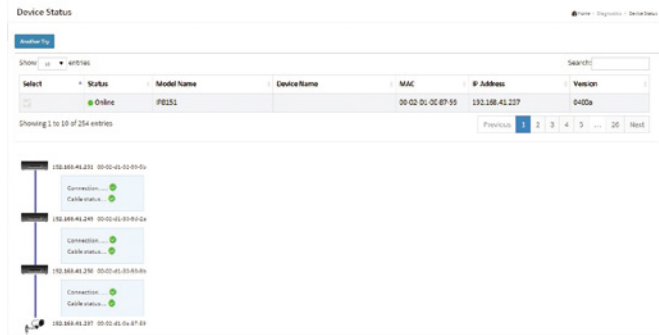
Traffic Chart

Auto-generated comprehensive chart to show port-by-port network traffic status.



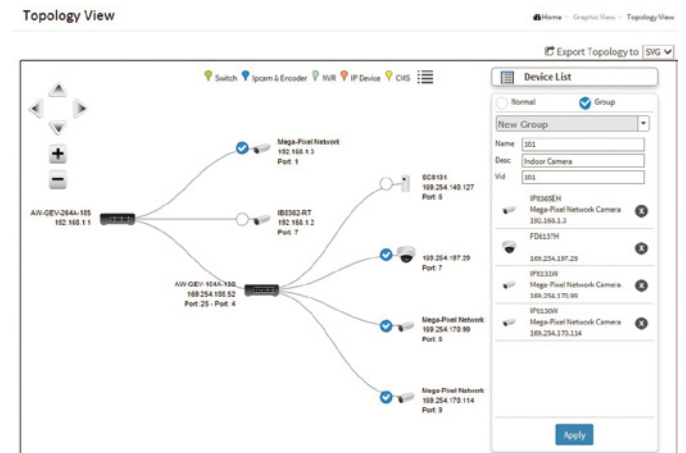
Device Status

Device Status page to show the real-time verification result of each connection between switch port and device.



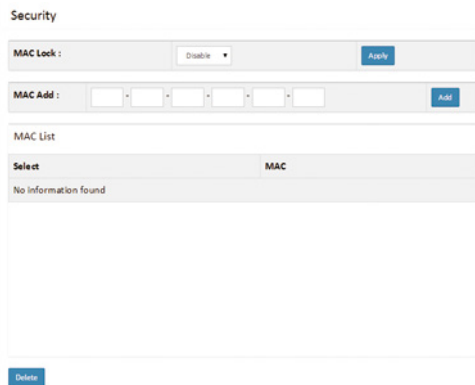
VLAN Setting

Hierarchical topology view allows administrators to easily build a VLAN.



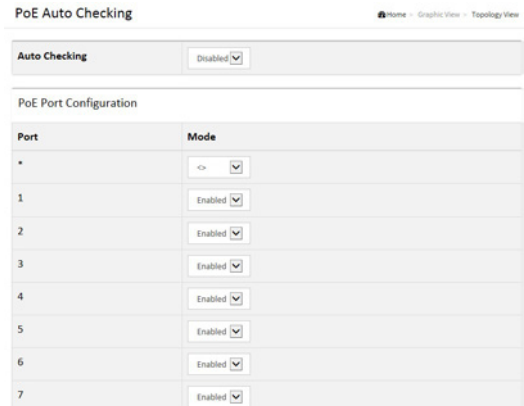
Port Security by Specific MAC Lock

Enable MAC Lock function to prevent unwanted connection from unknown devices.



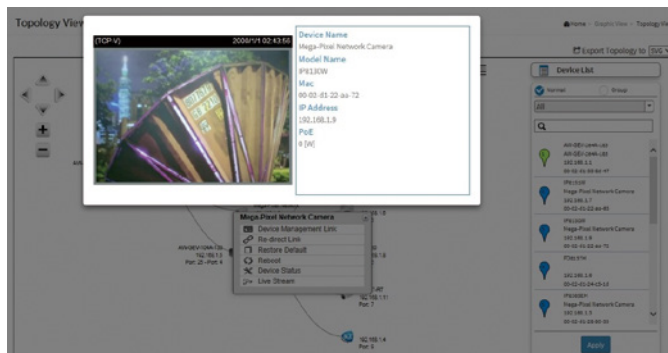
PoE Management

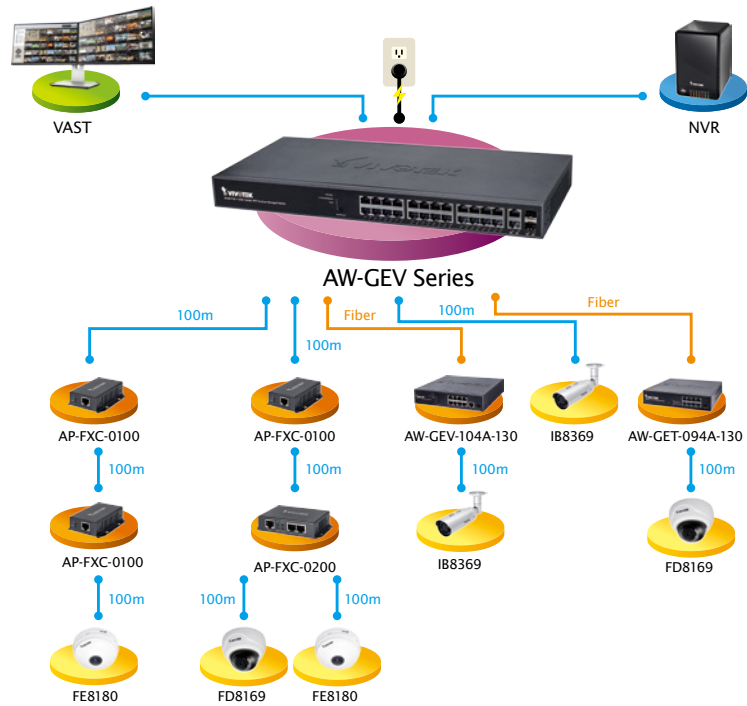
Provides useful PoE management tools in Topology View, such as PoE On/Off Configuration, Powered device alive checking.



Live Stream

Display live streaming camera window in Topology View, Floor View and Google Map View.

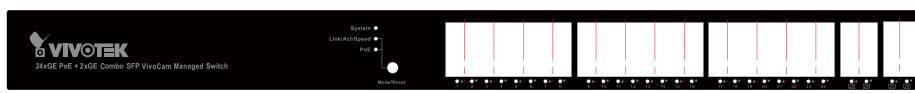




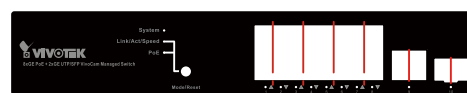
Ordering Information

Model Name	Product Description
VivoCam PoE Switch	
AW-GEV-104A-130	VivoCam L2 Managed PoE Switch 8xGE PoE + 1xGE UTP + 1xGE SFP, 130W
AW-GEV-264A-185	VivoCam L2 Managed PoE Switch 24xGE PoE + 2xCombo GE, 185W
AW-GEV-264A-370	VivoCam L2 Managed PoE Switch 24xGE PoE + 2xCombo GE, 370W
Web Smart PoE Switch	
AW-GET-094A-130	Web Smart 8xGE PoE +1xGE SFP Switch, 130W
PoE Extender	
AP-FXC-0100	1-Port Indoor FE PoE Extender
AP-FXC-0200	2-Port Indoor FE PoE Extender
IP Surveillance Device	
Network Camera	All VIVOTEK Network Cameras
Video Server	All VIVOTEK Video Servers
NVR	All VIVOTEK NVRs
CMS	VAST

AW-GEV Series Front View



- 1 LED Indicators
- 2 Mode Selector & Reset Button
- 3 PoE RJ45 Ethernet Ports x24
- 4 Combo Gigabit Ethernet Ports x2



- 1 LED Indicators
- 2 Mode Selector & Reset Button
- 3 PoE RJ45 Ethernet Ports x8
- 4 Gigabit RJ45 Ethernet Port x1
- 5 Gigabit SFP Ethernet Port x1

- 1 LED Indicators
- 2 Mode Selector & Reset Button
- 3 PoE RJ45 Ethernet Ports x24
- 4 Combo Gigabit Ethernet Ports x2

- 1 LED Indicators
- 2 Mode Selector & Reset Button
- 3 PoE RJ45 Ethernet Ports x8
- 4 Gigabit RJ45 Ethernet Port x1
- 5 Gigabit SFP Ethernet Port x1

Technical Specifications

Model	AW-GEV-104A-130	AW-GEV-264A-185	AW-GEV-264A-370
Product Description	VivoCam L2 Managed PoE Switch 8xGE PoE + 1xGE UTP + 1xGE SFP	VivoCam L2 Managed PoE Switch 24xGE PoE + 2xCombo GE	VivoCam L2 Managed PoE Switch 24xGE PoE + 2xCombo GE
Managing IP Surveillance Functions			
Management			
Auto Search VIVOTEK Device	up to 1000 pcs	up to 1000 pcs	up to 1000 pcs
Surveillance Device Management List	V	V	V
DHCP Server Function	V	V	V
VIVOTEK Device Account/Password Setting	V	V	V
VIVOTEK Device Static IP Setting	V	V	V
VIVOTEK Device Grouping Setting for VLAN	V	V	V
VIVOTEK Device Name Edit	V	V	V
VIVOTEK Camera/Video Server Reboot/ Restore Default	V	V	V
VIVOTEK Device Re-direct Link	V	V	V
VIVOTEK Device On/Off Line Status	V	V	V
E-Map View			
Topology View	V	V	V
Floor View	V	V	V
Google Map View	V	V	V
Maintenance			
VIVOTEK Camera/Video Server Batch SW Upgrade	V	V	V
VIVOTEK Camera/Video Server Configuration File Export/Import	V	V	V
VIVOTEK Cameras/Video Server Configuration File Management	V	V	V
Floor Image Management	V	V	V
Export Surveillance Management Device List	V	V	V
Security	V	V	V
Trouble Shooting	V	V	V
Traffic Monitoring	V	V	V
Managed L2 PoE Switch Functions			
Port Configuration			
10M/100M/1G RJ45 Port	9	24	24
100M/1G SFP Port	1	-	-
GbE RJ45/SFP Combo Port	-	2	2
Total Ports	10	26	26
HW Performance			
Switching Bandwidth	20Gbps	52Gbps	52Gbps
MAC Address	8K	8K	8K
Jumbo Frames	9216 Bytes	9216 Bytes	9216 Bytes
L2 Switching			
Spanning Tree	IEEE802.1D (STP)	V	V
	IEEE802.1w (RSTP)	V	V
	IEEE802.1s (MSTP)	V	V
VLAN	802.1Q VLAN	4096 VLAN IDs	4096 VLAN IDs
	SVL/ IVL	V	V
	Private VLAN	V	V
	Guest VLAN	V	V
	Q-in-Q (Double Tag)	V	V
	802.1v Protocol VLAN	V	V
	MAC-based VLAN	V	V
	IP Subnet-based VLAN	V	V
Port Grouping	IEEE 802.3ad with LACP (Dynamic)	up to 10 ports in a group, max up to 5 groups	up to 16 ports in a group, max up to 13 groups
	Static Trunk	up to 8 ports in a group, max up to 5 groups	up to 8 ports in a group, max up to 13 groups
IGMP Snooping (v1/v2/v3)	V	V	V
Loop Detection	V	V	V

Technical Specifications

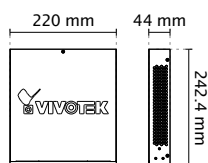
Model		AW-GEV-104A-130	AW-GEV-264A-185	AW-GEV-264A-370
Product Description		VivoCam L2 Managed PoE Switch 8xGE PoE + 1xGE UTP + 1xGE SFP	VivoCam L2 Managed PoE Switch 24xGE PoE + 2xCombo GE	VivoCam L2 Managed PoE Switch 24xGE PoE + 2xCombo GE
L3 Features				
IP Host Table		V	V	V
Static Route		V	V	V
Static ARP		V	V	V
DHCP Server		V	V	V
QoS Features				
Hardware Queues		8	8	8
Class Of Service	Port Based	V	V	V
	802.1p	V	V	V
	CoS	V	V	V
	DSCP	V	V	V
	TCP/UDP (IPv4/IPv6)	V	V	V
Rate Limiting	Ingress	V	V	V
	Egress	V	V	V
Priority Queue Scheduling	WRR	V	V	V
	Strict Priority	V	V	V
IPv4 QoS (QCEs)		V	V	V
IPv6 QoS (QCEs)		V	V	V
Security				
Port Security (MAC-based)		V	V	V
IEEE802.1x		V	V	V
ACLs	L2/L3/L4	V	V	V
	IPv6 Support	V	V	V
IP Source Guard (IP-MAC-Port Binding)		V	V	V
Storm Control		V	V	V
RADIUS Authentication (RFC2138)		V	V	V
DDoS Prevention		V	V	V
Layer 3 Isolation (Allow /disallow routing between IP Subnets)		V	V	V
HTTPs and SSL (Secured Web)		V	V	V
SSH v1.5/v2.0 (Secured Telnet Session)		V	V	V
BPDU Guard		V	V	V
STP Root Guard		V	V	V
DHCP Snooping		V	V	V
Management				
SNMP (v1, v2c, v3)		V	V	V
RMON (1,2,3 & 9 groups)		V	V	V
Software Upgrade		V	V	V
Configuration Export/Import		V	V	V
DHCP	Client	V	V	V
	Option 66	V	V	V
	Option 67	V	V	V
Event/Error Log	Syslog	V	V	V
Management Access Filtering	SNMP	V	V	V
	Web	V	V	V
	Telnet	V	V	V
Port Mirroring		V	V	V
MLD Snooping		V	V	V
LLDP (IEEE802.1AB)		V	V	V
LLDP-MED		V	V	V
CDP		V	V	V
NTP/ SNTP (RFC2030)		V	V	V
IPv6 Support				
Dual IPv6/IPv4 stack		V	V	V

Technical Specifications

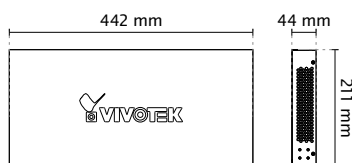
Model	AW-GEV-104A-130	AW-GEV-264A-185	AW-GEV-264A-370
Product Description	VivoCam L2 Managed PoE Switch 8xGE PoE + 1xGE UTP + 1xGE SFP	VivoCam L2 Managed PoE Switch 24xGE PoE + 2xCombo GE	VivoCam L2 Managed PoE Switch 24xGE PoE + 2xCombo GE
IPv6 Web/SSL	V	V	V
IPv6 SNTP (Simple Network Time Protocol)	V	V	V
IPv6 Telnet Server/ SSH	V	V	V
IPv6 Ping Trace Route	V	V	V
IPv6 TFTP	V	V	V
IPv6 RADIUS	V	V	V
IPv6 Syslog	V	V	V
IPv6 DNS Client	V	V	V
IPv6 Protocol-based VLANs	V	V	V
IPv6 SNMP	V	V	V
PoE Management			
ON/OFF Config	V	V	V
Alive Checking for PD	V	V	V
Power Delay	V	V	V
7/24 On/Off Scheduling	V	V	V
PoE Function			
Number of PoE Out Ports	8	24	24
Max. PoE Output Power/per Port	30W	30W	30W
802.3at/af standard Compatible	V	V	V
Over Current Protection	V	V	V
Circuit Shorting Protection	V	V	V
Total PoE Power Budget	130W	185W	370W
Power Pin Assignment	1/2(+), 3/6(-)	1/2(+), 3/6(-)	1/2(+), 3/6(-)
PoE PD Auto Detection	V	V	V
Environmental Specifications			
Operating Temperature	0°C ~ 50°C (32°F ~ 122°F)	0°C ~ 50°C (32°F ~ 122°F)	0°C ~ 50°C (32°F ~ 122°F)
Operating Humidity	10 ~ 90% RH	10 ~ 90% RH	10 ~ 90% RH
Storage Temperature	-20°C ~ 70°C (-4°F ~ 158°F)	-20°C ~ 70°C (-4°F ~ 158°F)	-20°C ~ 70°C (-4°F ~ 158°F)
Storage Humidity	10 ~ 90% RH	10 ~ 90% RH	10 ~ 90% RH
Mechanical Specifications			
Dimensions	44 (H) x 220 (W) x 242.4 (D) mm	44 (H) x 442 (W) x 211 (D) mm	44 (H) x 442 (W) x 211 (D) mm
Weight	2 kg	3.1 kg	3.5 kg
Power Source			
AC input	100V-240V	100V-240V	100V-240V
Certifications			
Certifications	CE, FCC, LVD, VCCI, C-Tick	CE, FCC, LVD, VCCI, C-Tick	CE, FCC, LVD, VCCI, C-Tick
Accessories			
Optional Accessories	SFP Transceiver SFP-1000-MM85-X5: MMF, 0.5 km, 0°C ~ 70°C SFP-1000-MM13-02: MMF, 2 km, 0°C ~ 70°C SFP-1000-SM13-10: SMF, 10 km, 0°C ~ 70°C SFP-1000-SM13-40: SMF, 40 km, 0°C ~ 70°C		

Dimensions

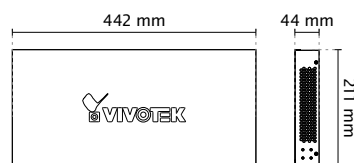
• AW-GEV-104A-130



• AW-GEV-264A-185



• AW-GEV-264A-370



All specifications are subject to change without notice. Copyright © VIVOTEK INC. All rights reserved.

Ver. 13



VIVOTEK INC.
 6F, No.192, Lien-Cheng Rd., Chung-Ho,
 New Taipei City, 235, Taiwan, R.O.C.
 T: +886-2-82455282 F: +886-2-82455532
 E: sales@vivotek.com

VIVOTEK USA
 2050 Ringwood Avenue,
 San Jose, CA 95131
 T: 408-773-8686 F: 408-773-8298
 E: salesusa@vivotek.com

VIVOTEK Europe
 Randstad 22-133, 1316BW Almere,
 The Netherlands
 T: +31(0)36-5298-434
 E: sales@vivotek.com

VIVOTEK India
 602, Best sky Tower, Plot No. F-5,
 Netaji Subhash Place, Pitam Pura, Delhi-110 034
 T: +91-11-45137465
 E: salesindia@vivotek.com